



PLASTIC DRAINAGE SYSTEMS
STYRON KFT.

WWW.STYRON.HU

INSTALLATION PROPOSAL FOR STY-904, STY-904-E, STY-904-M, STY-915, STY-915-E AND STY-915-M DRAINAGE CHANNELS

Preparation process:

1. It is required 33-35 cm wide trench approx. 25-30 cm deeply. In this ditch, a concrete base must be made according to the *figure 1*.
2. After this, it is possible to start the laying of the drainage channels, first of all connect the end of the drainage channels with the next drainage channels and connect them with the drain pipe after laying (Figure 2.). In case of vertical drainage, cut the perforated opening and then the vertical pipe (Figure 3).

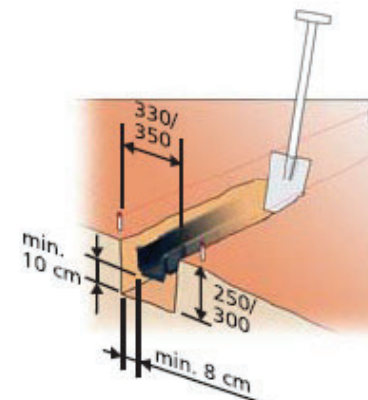


Figure 1.

ATTENTION!

3. In order to prevent the subsidence of soil of the formed level, we subgrade under the underlayer and that border the drainage channel from two sides on pebbles.
4. IMPORTANT: the surface that is already formed should be 3-5 mm higher than the upper edge of the drainage channel!

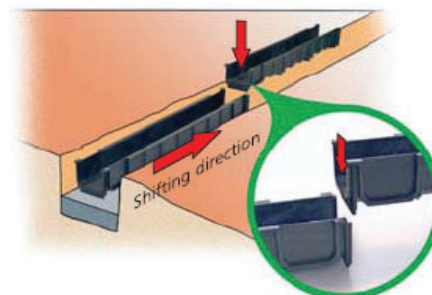


Figure 2.

INSTALLATION EXAMPLES FOR THE A-15 CLASS

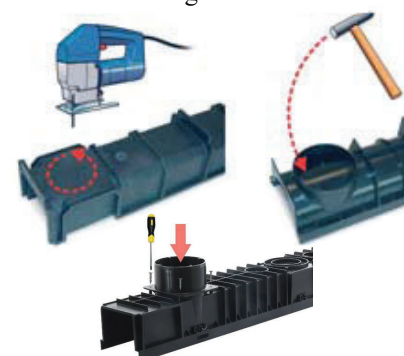
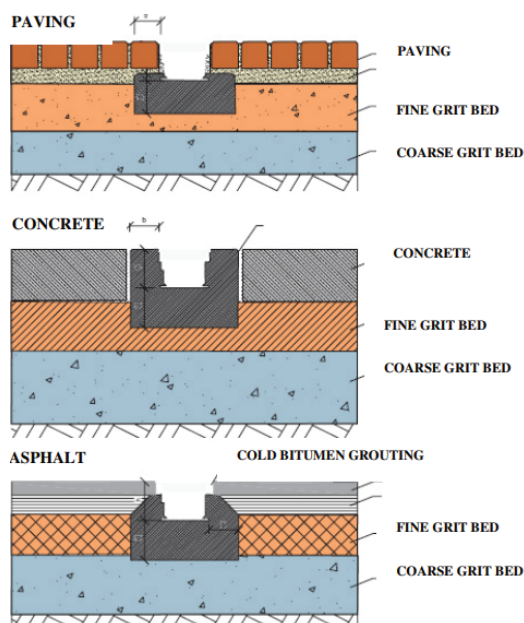


Figure 3.

QUALITY

The quality of the Styron drainage channels is certified according to DIN EN ISO 9001: 2000 and in addition meets the requirements of DIN EN 1433 EURONORM. Ezért a termékek a Suitable for installation in pavements subjected to pedestrian and/or vehicular traffic. In the latter case, a 10 cm thick concrete bed is required around the perimeter! (see page 6, 'Installation').

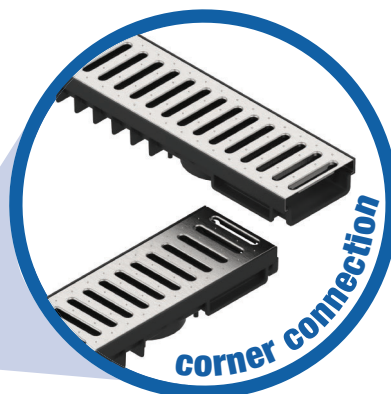
www.styron.hu

Smooth, nonporous surfaces,
providing adequate self-cleaning

STY-904-M

Temperature resistance
from -20°C to +95°C-ig

Easy
connection



STY-904-E

Depth of installation: 55 mm

Pre-designed vertical
drainage
connectable with STY-911
fitting DN 100

STY-907

Low profile drainage
channel end cap



STY-904



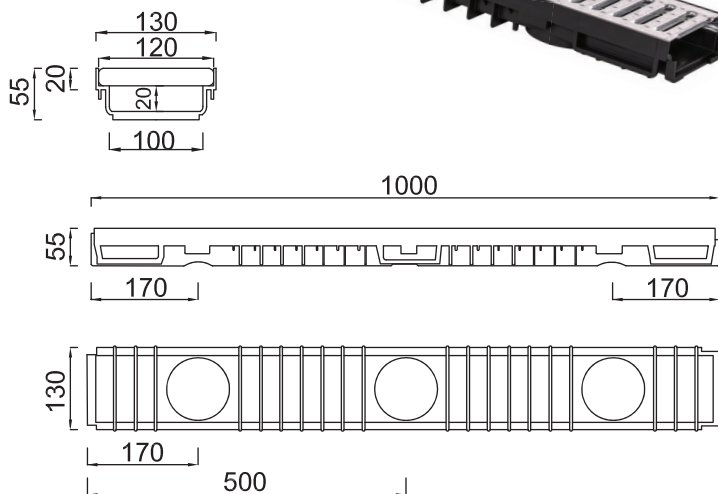
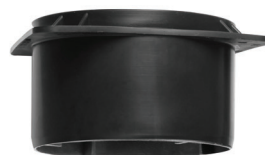
STY-909

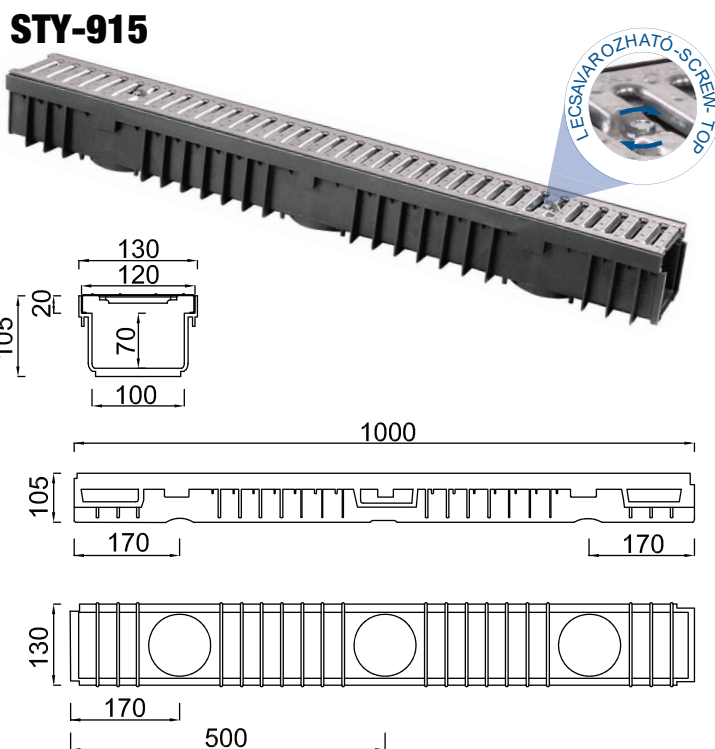
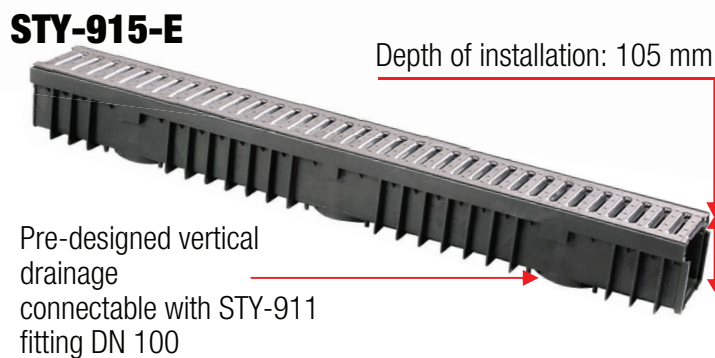
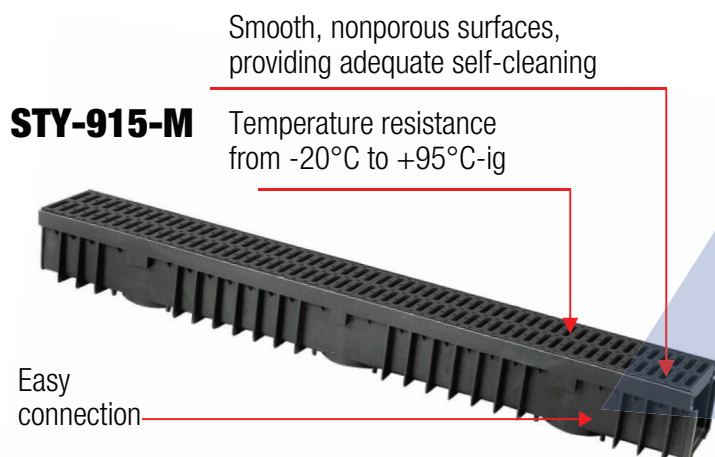
Drainage channel end cap
outlet Ø75 mm



STY-911

Ø110 mm bottom outlet
for drainage channel





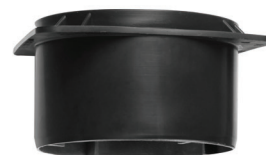
STY-908 Drainage
channel end cap



STY-910 Drainage channel end
cap outlet Ø110 mm



STY-911 Ø110 mm bottom outlet
for drainage channel



LOAD-BEARING
DRAINAGE
CHANNELS



INSTALLATION MANUAL FOR HEAVY-DUTY PLASTIC OUTDOOR CHANNEL DRAINS A-15 - C250, WITH CONCRETE INSTALLATION

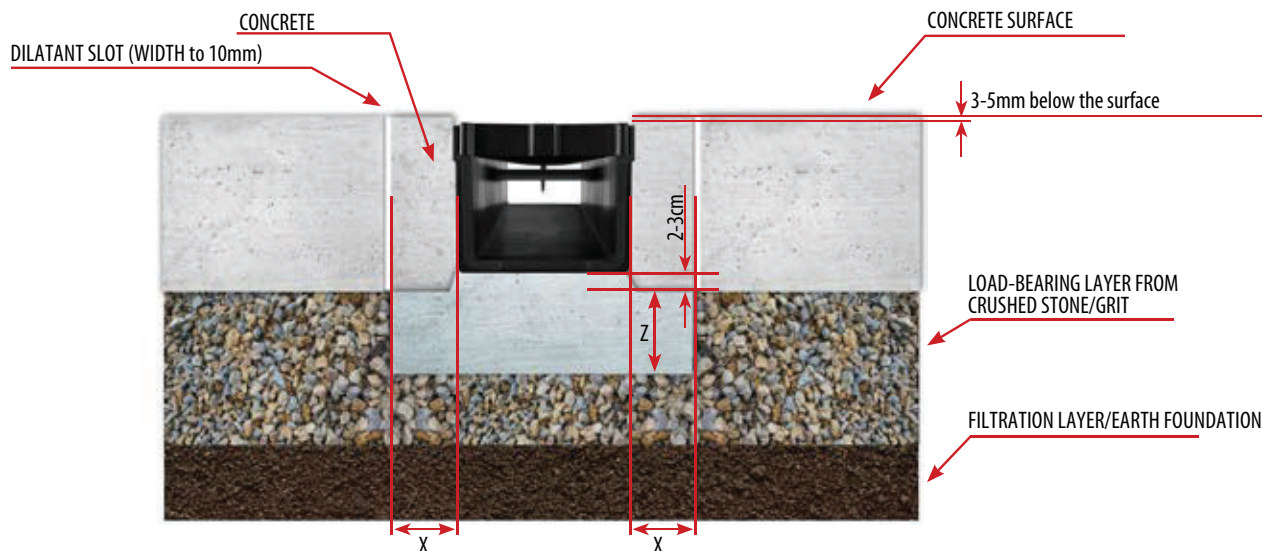
ASSEMBLY MANUAL

1. Prepare appropriate substrate in line with the design and according to the soil type.
2. Mark the future position of the draining system with pegs and nylon lines stretched from one peg to the other one.
3. Prepare a trench with width and height increased to include the cement & sand bed. The channels should be laid 3-5 mm below the ground level so that no horizontal forces are transferred to the side walls.
4. Prepare concrete and pour it on the trench bottom.
5. Place the first drain in a trench on the earlier prepared concrete so as to form a concrete band the trough.
6. Next drain channel sections should be joined by tongue and groove connection. Seal the joints with sanitary silicone. If necessary the channels can be cut to length using a grinder with a concrete grinding disc. Once cut protect the covers using anticorrosive paint.
7. Checking the correctness of assembly means checking if the troughs are placed rectilinearly and checking tightness with the use of water.

WARNING!

The grid must be screwed on. When grinding concrete floors remove the covers as they could be permanently damaged which is not covered by the warranty. Unclogging by removing the deposits or snow / ice in winter time. Do not use saline solutions as they would accelerate corrosion of grids.

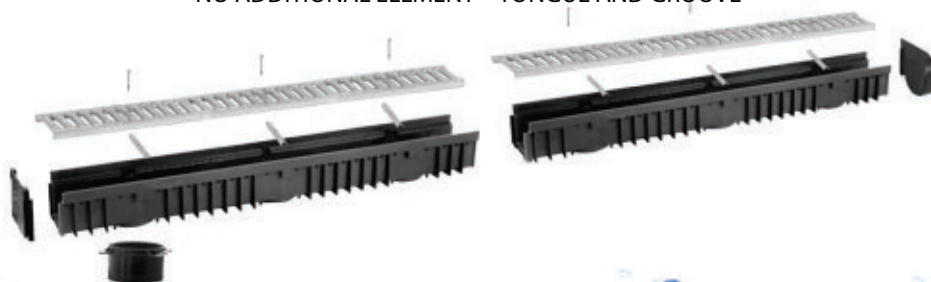
The producer is in no way responsible for any damaged occurring due to incorrect assembly of drains!



LOAD CLASS	A 15	B 125	C 250
Dimensions of the concrete berm X (MM)	100	150	200
Dimensions of the concrete berm Z (MM)	100	150	200
Concrete class for the berm	C 35/45	C 35/45	C 35/45

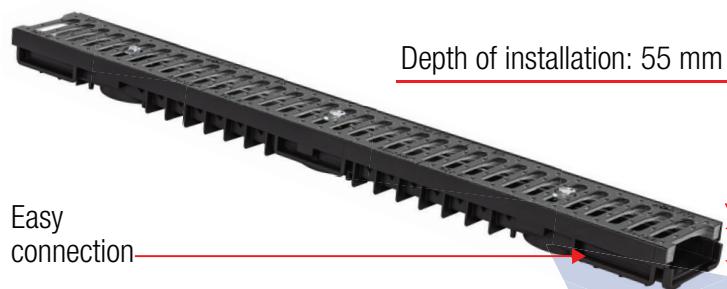
WAY OF CONNECTING PLASTIC ELEMENTS

NO ADDITIONAL ELEMENT – TONGUE AND GROOVE

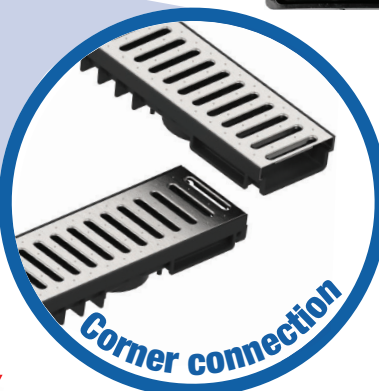
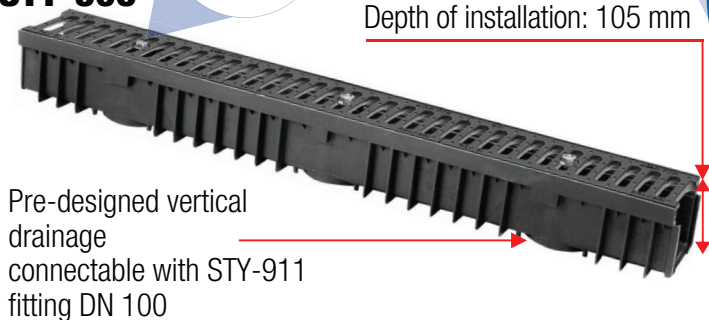


www.styron.hu

STY-905



STY-906



STY-907

Low profile drainage channel end cap



STY-908

Drainage channel end cap



STY-910

Drainage channel end cap outlet Ø75 mm



STY-909

Drainage channel end cap outlet Ø110 mm



STY-911

Ø110 mm bottom outlet for drainage channel

